



LOCAL PUBLIC HEALTH
INSTITUTE OF MASSACHUSETTS



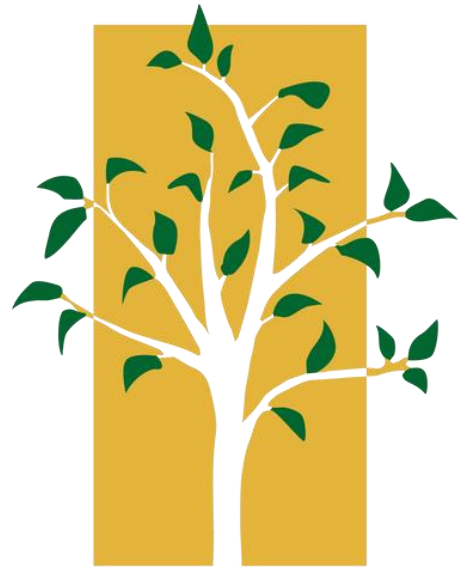
Public Health Training Centers- Overview and Updates

Madeleine K. Scammell, DSc. and Patricia Janulewicz-Lloyd, DSc., MPH

**Associate Professors of Environmental Health
Boston University School of Public Health**



Boston University School of Public Health



LOCAL PUBLIC HEALTH
INSTITUTE OF MASSACHUSETTS

Local Public Health Institute of Massachusetts

Yankee Conference
September 21, 2023

About LPHI

We are a comprehensive, convenient resource for public health trainings to support a skilled local public health workforce.



Who We Serve

1

Staff and members of the 351 local boards of health in Massachusetts

2

Staff at the state level on topics that require state/local partnerships

3

Students pursuing local public health careers

4

Members of the regulatory community



Types of Trainings



Environmental Health



Emergency Preparedness



Behavioral Health



**Leadership and
Communication**



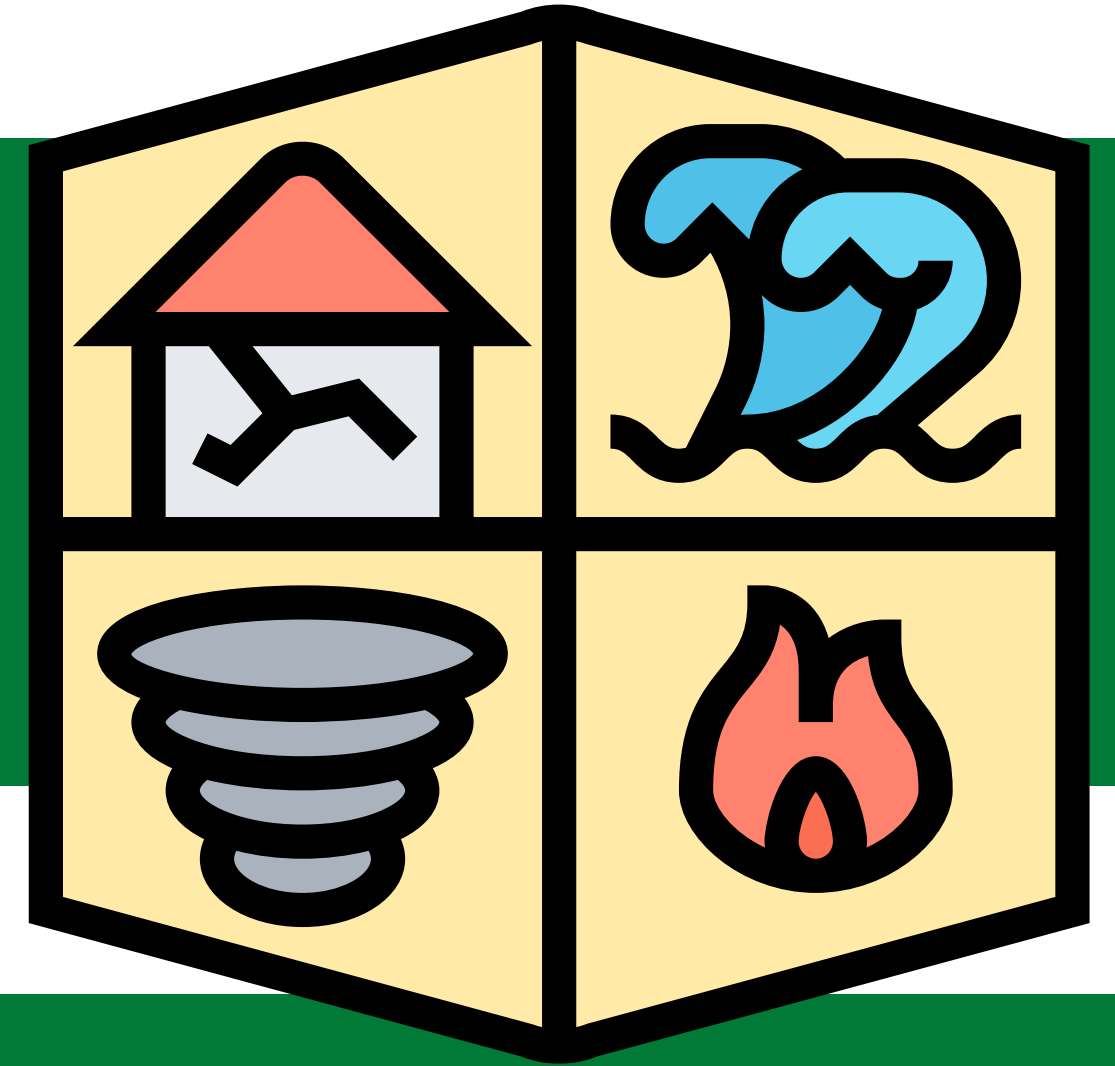
Training Utilization

Top 10 Trainings

Course Title	Number of Participants
Orientation to Local Public Health	476
Dealing with Stress in Disasters: Building Psychological Resilience	247
Health Promotion and Health Equity	228
Tanning Facilities for Regulators and Operators	222
What is Public Health?	189
Safety: Practical Strategies While Doing Field Work	179
Opioid Epidemic & Substance Use Disorder: A Primer for MA Boards of Health	170
Hoarding: A Special Housing Topic	168
Public Health Law and Legal Issues in Massachusetts	164
Food Protection Program for Regulators	160

Training Highlights

Dealing with Stress in Disasters



Learning Objectives:

- Summarize the effects of stress on health
- Identify the types of compassion fatigue, risk factors, & coping strategies
- List attributes of psychological resilience & individual coping strategies

Training Highlights

Health Promotion and Health Equity



Learning Objectives:

- Describe the Healthy People initiative & leading health indicators
- Detail three health promotion strategies
- Name four ways you can support health equity in your community

Training Highlights

Essentials of Data Visualization for Public Health



Learning Objectives:

- Name & describe common types of data projects
- Select appropriate methods for starting & completing different data projects
- Recognize common errors to avoid when working with data

Racial Equity and Inclusion OYT Trainings

This year, we worked with the Activist Lab at BUSPH to develop a tool to review our entire catalog of over 50 self-paced trainings for representation of racial equity, diversity, and inclusion.



THANK YOU

Ojaswini (Wini) Bakshi, MA, MPH

Program Manager

Kathleen MacVarish, MS, REHS, RS

Instructional Designer

Alyssa Faria, MPH

Training Manager

Olivia Stenger, BA

Program Assistant

<https://sites.bu.edu/masslocalinstitute>



Boston University School of Public Health





New England Public Health Training Center

Yankee Conference
September 21, 2023

About NEPHTC

- We deliver a wide range of training programs and services that strengthen the public health workforce.
- We engage public health and community-based agencies across New England via partnerships with community organizations in each state.



Our Regional Partners

MA

- Boston Public Health Commission (BPHC)
- Local Public Health Institute (LPHI)
- School Health Institute for Education and Leadership Development (SHIELD)

RI

- Rhode Island Public Health Institute (RIPHI)
- Rhode Island Department of Health (RIDOH)

CT

- Yale University

NH

- Southern New Hampshire Area Health Education Center (SNH AHEC)
- New Hampshire Public Health Association (NHPHA)

VT

- Vermont Public Health Institute (VTPHI)

ME

- Maine Public Health Association (MPHA)
- University of New England

Our Advisors



**Patrick Maloney,
MA Health Officer**



**Tom St. Louis,
CT Dept. of Health**



**Nancy Birkhimer,
ME Center for Disease Control & Prevention**



**Alia Hayes,
NH Dept. of Health & Human Services**



**Rachael Sardinha,
RI Dept. of Health**

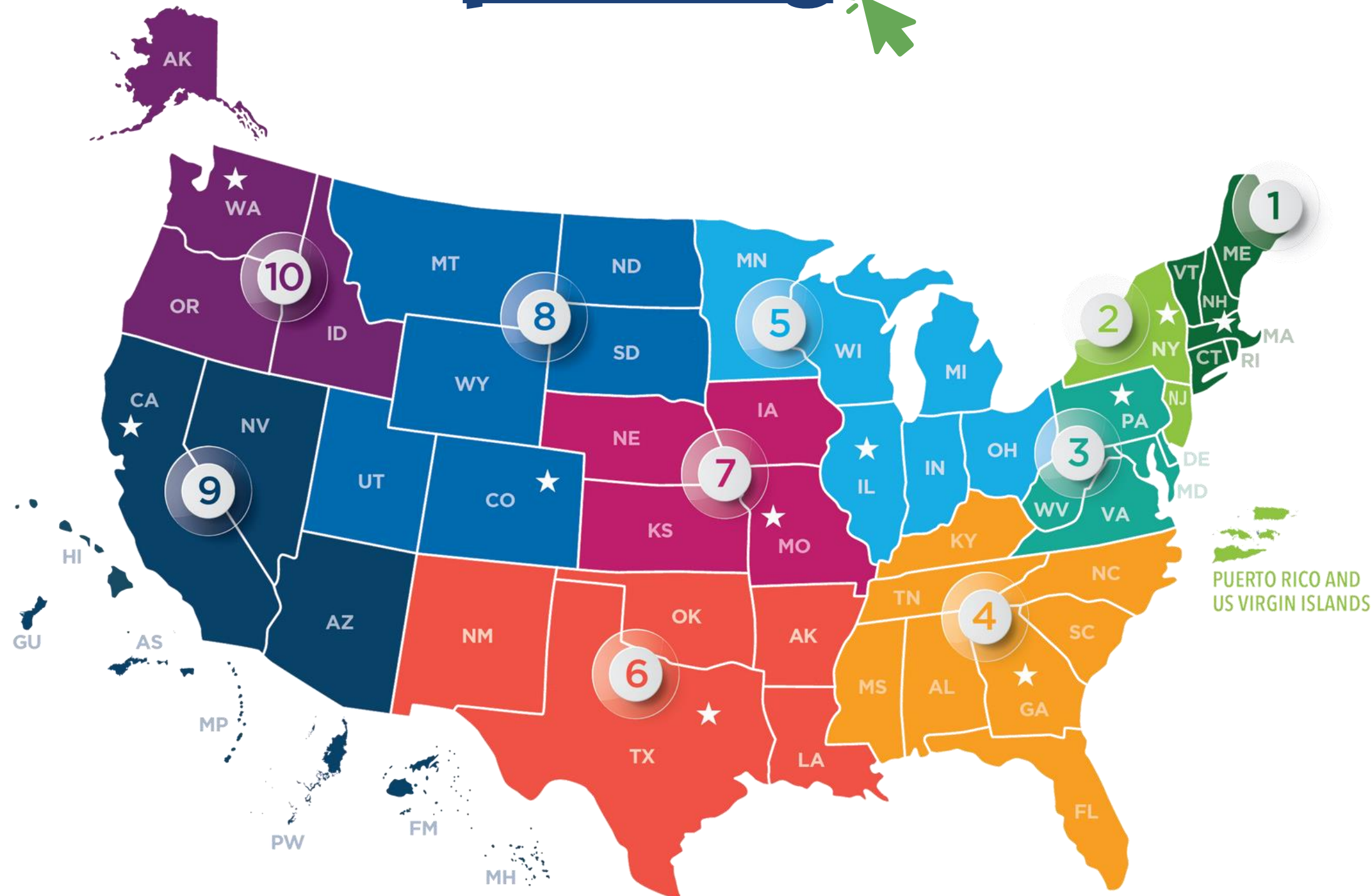


**Christian Berry,
VT Dept. of Health**

Public Health Training Center Network

phtcn.org

6	SOUTH CENTRAL PHTC Tulane University
Arkansas, Louisiana, New Mexico, Oklahoma, Texas	
7	MIDWESTERN PHTC University of Iowa
Iowa, Kansas, Missouri, Nebraska	
8	ROCKY MOUNTAIN PHTC University of Colorado
Colorado, Montana, North Dakota, South Dakota, Utah, Wyoming	
9	WESTERN REGION PHTC University of Arizona
Arizona, California, Hawaii, Nevada, U.S. Affiliated Pacific Islands	
10	NORTHWEST PHTC University of Washington
Alaska, Idaho, Oregon, Washington	



1	NEW ENGLAND PHTC Boston University
Connecticut, Maine, Massachusetts, New Hampshire, Rhode Island, Vermont	
2	REGION 2 PHTC Columbia University
New Jersey, New York, Puerto Rico, U.S. Virgin Islands	
3	MID-ATLANTIC REGIONAL PHTC University of Pittsburgh
Delaware, District of Columbia, Maryland, Pennsylvania, Virginia, West Virginia	
4	REGION IV PHTC Emory University
Alabama, Florida, Georgia, Kentucky, Mississippi, North Carolina, South Carolina, Tennessee	
5	REGION V PHTC University of Michigan
Illinois, Indiana, Michigan, Minnesota, Ohio, Wisconsin	

Student Stipend Program

Need funding?



NEPHTC provides stipends of \$3,500 to 27 students per year for field placements & faculty-student collaborative projects throughout New England.



Sarah Slater-Sosa
Southern New Hampshire University

Sarah's project with North Country Health Consortium was a population-based intervention to increase access to the outdoors by improving the 400-acre school property with a specific focus on incorporating nature, physical activity, and social-emotional well-being into the daily lives of children and community.

Victoria Adewumi
Johns Hopkins University

Victoria served as a Community Health Worker with the City of Manchester NH Health Department. Her project centered on conducting an analysis of school-based opportunities for Community Health Workers to facilitate adolescent health in the school environment and to create a findings report of survey data.



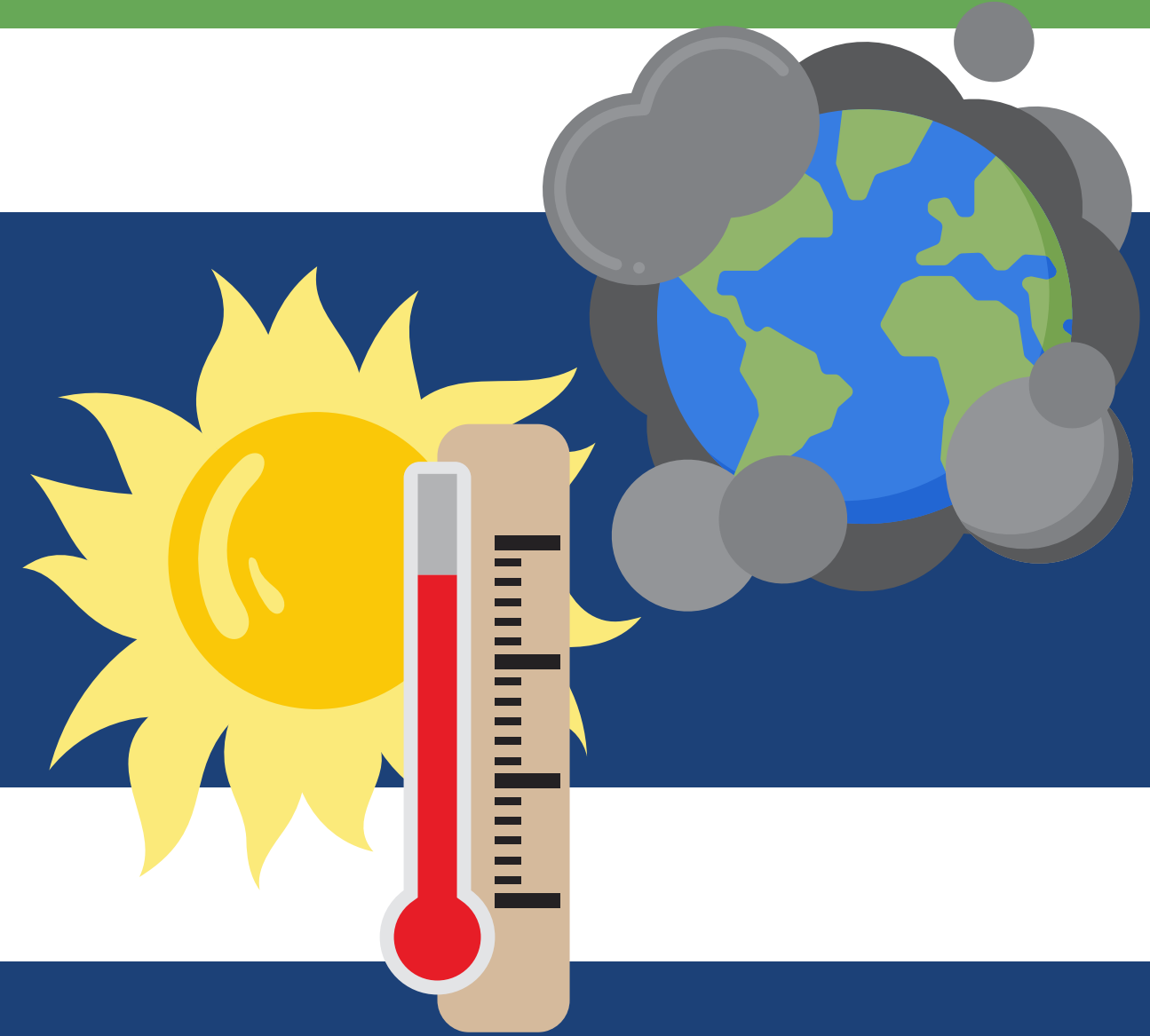
Mackenzie Amadei
University of New England

Mackenzie's project with Maine Public Health Association (MPHA) focused on performing statistical analysis of the Maine Public Health Workforce Survey data and creating a report. She compiled recommendations, a fact sheet, and a presentation for the MPHA Annual Meeting in October 2022.



Training Highlights

Environmental Exposures and Health at the Local Level: Extreme Heat & Air Pollution



Learning Objectives:

- Identify facilitators & barriers when communicating environmental health risks
- Discuss relevant environmental health policy & regulatory applications
- Explain key environmental health concepts, risk factors for various environmental exposures, & community-engaged approaches

Training Highlights

Introduction to Zoonoses and Vector borne Diseases and their Drivers

Learning Objectives:

- List key environmental drivers that impact zoonotic and vectorborne disease
- Explain how agricultural systems influence zoonotic and vectorborne diseases
- Explain how land use & ecosystem disruption can impact zoonotic and vectorborne diseases



Training Highlights

Our Voice: Harnessing Local Expertise to Create Healthier Communities



Learning Objectives:

- List specific strategies for community members to create local change “from the bottom-up”
- Describe the importance of data in advocating for community-level change
- Assess the applicability of the Our Voice citizen science approach to a range of community-based efforts

THANK YOU

Karla Todd Barrett, MBA, MSM

Program Manager

Kathleen MacVarish, MS, REHS, RS

Instructional Designer

Alyssa Faria, MPH

Training Manager

Olivia Stenger, BA

Program Assistant

<https://sites.bu.edu/nephtc>



Boston University School of Public Health



THANK YOU

All of our partners at the LPHI and the NEPHTC

Students involved in the work being done at LPHI and NEHPTC

Our funders (DPH and HRSA)

The members and organizers of MEHA



Boston University School of Public Health

Questions?

Feel free to ask any
questions you have!



Thank You!

