

Norfolk County-8 Coalition

MDPH/LBOH Webinar 1/12/2021



Inter-agency Staff on the Webinar

- Jana Ferguson, Assistant Commissioner, DPH
- Ron O'Connor, Office of Local and Regional Health
- Dr. Catherine Brown, Bureau of Infectious Disease and Laboratory Sciences
- Jennifer Robertson, Department of Public Health
- Donna Quinn, Office of Preparedness and Emergency Management
- Mary Dozois and Adam Kinney, Department of Labor Standards
- Helene Bettencourt and Anne Gilligan, Department of Elementary and Secondary Education
- Cheryl Sbarra, Massachusetts Association of Health Boards
- Chief Edward Dunne, Massachusetts Chiefs of Police Association
- Jeff Farnsworth, Executive Office of Public Safety and Security

Announcements:

Higher education and boarding schools: They received a survey to share plans for the upcoming semester related to contact tracing, testing and density, and will be used to inform processes and communications. The LBOH contact will be sent the survey results for schools in their jurisdiction. The survey is due January 13th. There will also be a Spring Semester Preparation Webinar on January 14th at 12 pm that will review lessons learned from last semester and an overview of contact tracing, isolation and quarantine protocols, roles and responsibilities, and communication messaging for school administration/leadership, COVID-19 coordinators, contact tracing teams, and LBOH. If you have any questions, please email sarah.c.welch@mass.gov

DESE: Pooled testing. Webinar this morning with 1,000 attendees. Early launch (rather than a pilot program) because all public schools who are able and wanting to participate can choose to do so. We will be following up with a FAQ. If you have any questions in the interim please contact: K12COVIDtesting@mass.gov

CTC: Still seeing high numbers and record cases coming to CTC. Anywhere from 4,000-5,000 per day. Staffed with 2,000 people. Using surge protocols which means that close contacts receive SMS and phone calls with a long voicemail about who we are, why we are calling, and to provide information about where to go for information about quarantine and isolation. CTC making 15k telephone calls per day. If you have specific questions about a case, reach out to Local Health Liaison and they can review that case. New general email address: CTClocalhealthhelp@covid19.pih.org

Liability protections: Law signed in April, retroactive to March 10th. Health care professionals and health care services shall be immune from suit and civil liability for any damages sustained in the course of providing health care services during the period of COVID-19. "Health care

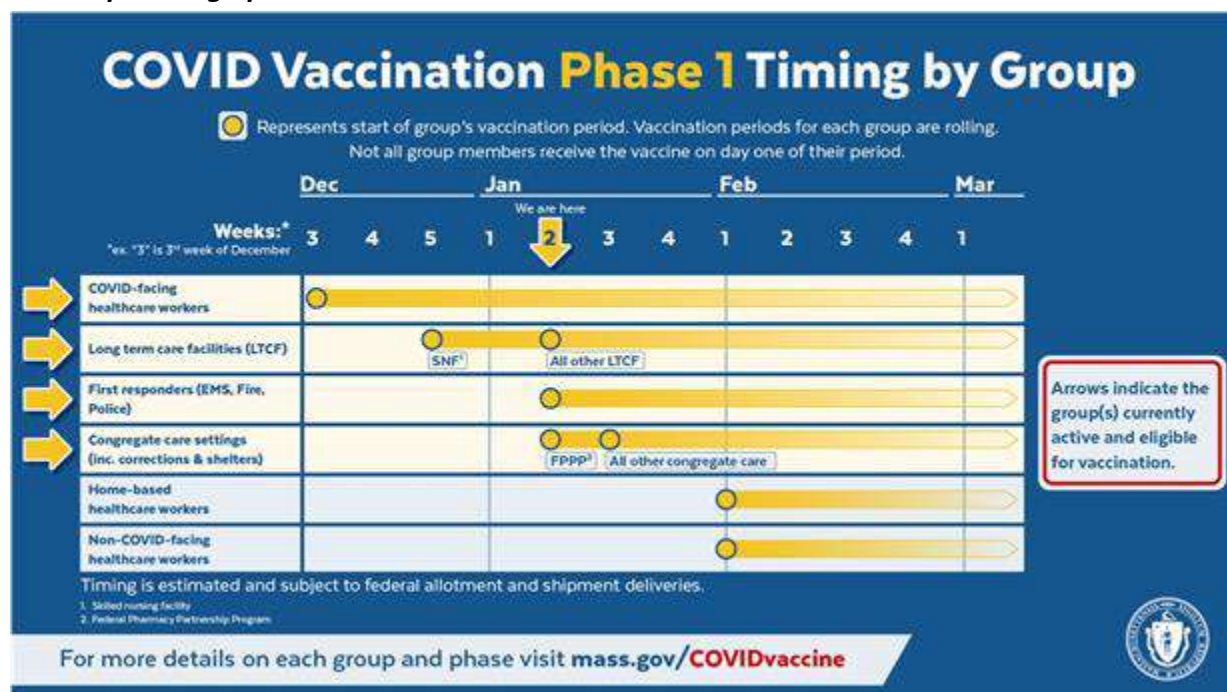
Norfolk County-8 Coalition

MDPH/LBOH Webinar 1/12/2021



services” are provided by a health care facility or health care professional, regardless of location, that involve the treatment, diagnosis, prevention or mitigation of COVID-19. Other liability protections exist as well.

Vaccine planning update:



Currently at “First Responders.” Next group is congregate care settings. DPH will be working directly with corrections

Congregate Care and Shelter Settings: Who is included?

- Group homes, residential treatment programs, community-based acute residential treatment programs and clinical stabilization service programs funded, operated, licensed and/or regulated by the Department of Early Education and Care (EEC), the Department of Children and Families (DCF), the Department of Youth Services (DYS), the Department of Mental Health (DMH), the Department of Public Health (DPH), the Department of Developmental Services (DDS), the Department of Veterans’ Services (DVS), the Massachusetts Commission for the Blind (MCB), and the Massachusetts Rehabilitation Commission (MRC).
- Emergency shelter programs, including individual and family homeless shelters, domestic violence and sexual assault shelters, Veterans’ shelters.
- Approved private special education schools which offer residential services and are approved by the Department of Elementary and Secondary Education.

Norfolk County-8 Coalition

MDPH/LBOH Webinar 1/12/2021



- “Staff” includes all persons, paid or unpaid, working or volunteering at each of the congregate care and shelter program physical locations, who have the potential for exposure to residents or to infectious materials, including body substances, contaminated medical supplies and equipment, contaminated environmental surfaces, or contaminated air.

Vaccine deployment options for congregate care/shelters:

- Option 1: Program “Self-Administration”

Organizations that have the capability to directly receive and administer COVID-19 vaccines can request vaccine from DPH after meeting the following requirements. This option is likely to be the most convenient for your staff and residents and the quickest method for them to obtain the vaccine. Self-administering organizations must plan to vaccinate 200 individuals.

 - 1) Review the [DPH guide for Applying to Administer the COVID-19 Vaccine](#)
 - 2) Onboard to DPH’s MIIS and enroll in the MCVP. If the site is not fully registered and on-boarded to submit the vaccine-administered data to MIIS, email the MIIS at miishelpdesk@mass.gov. If you did not receive the MCVP form contact the DPH vaccine unit at dph-vaccine-management@massmail.state.ma.us.
 - 3) Identify a practitioner to write a [Standing Order for Administering Vaccine](#) and have a [freezer/refrigeration storage capacity](#) to store the Moderna vaccine, and have the organizational capacity to vaccinate individuals and staff, including approved health care personnel to serve as vaccinators and to observe individuals post-vaccine.
 - 4) Adhere to screening, onsite protocols, consent, tracking, and second dose guidance.
- Option 2: Leverage existing pharmacy partnerships or other medical provider relationships. Programs may have existing pharmacy partnerships through regular flu vaccine clinics, and/or existing relationships with local hospitals, health care practices, community health centers, university health centers, or VNAs. These partnerships may be leveraged to administer COVID-19 vaccines. Programs are encouraged to contact existing health care partners to determine if they have the capacity to operate a vaccine clinic or mobile vaccine distribution. If you identify a clinical partner your agency contact can work with DPH to ensure your clinical partner is allocated vaccine.
- Option 3: Mass vaccination sites. In the next few weeks the Commonwealth will launch mass vaccination sites. They will require appropriate identification to establish individuals meet the congregate care prioritization criteria. Vaccination locations and appropriate forms of ID with guidance for employers and employees will be posted.

Norfolk County-8 Coalition

MDPH/LBOH Webinar 1/12/2021



Home-based healthcare workers: For programs/sites not enrolled in the [Federal Pharmacy Partnership Program \(FPPP\)](#), the first wave of vaccinating staff and residents is expected to begin the week of Jan 18th. DPH will be ready to allocate vaccines to sites within this phase when sites are ready. There are alternatives being made to vaccinate home healthcare workers and assisted living. Some are working with pharmacies, and some home health agencies are receiving the vaccine and vaccinating their staff. If you are having a local clinic, these people can go to you as well.

Q: How can you tell who fits in Phase 2 (i.e. over 75 and/or co-morbidities or if they work in a grocery store)?

A: Hopefully those 75+ and/or with co-morbidities can be vaccinated at their PCP's office, but in general we are using the honor code. If someone says they have co-morbidities, then you have to give it to them. Working on a potential attestation form.

COVID-19 vaccine for independent medical practices:

MA Medical Society (MMS) will be sending an email to healthcare providers for how to access the vaccine for smaller independent medical practices. A hospital in each region will receive an allotment of vaccine and act as a "depot" and they can help distribute this vaccine to different offices in the state. The depot will redistribute vaccine and ancillary materials for office-based vaccination or will provide direct vaccination to health care workers. To enroll in the office-based vaccination, providers must sign up for the MIIS, the MCVP, and possess a valid MA Controlled Substance Registration. There is an MMS Intake Form being sent to providers. The MMS will contact qualifying practices to discuss next steps including scheduling times for vaccine pick up at the local depot. If providers are not planning to administer the vaccine to staff, MMS will identify the corresponding depot/sites for vaccination, when available. For more information and questions, please contact the MMS via email: PPRC@mms.org

COVID-facing Health Care Workers:

If there are left over vaccines from First Responder clinics you can give it to local healthcare workers, but make sure it's flagged in MIIS. To receive a vaccine healthcare workers should bring one of the following forms of ID:

- For licensed health care professionals, current MA professional license
- Employer-issued photo ID card that includes your name and title
- Letter from employer stating you are a current employee AND state photo identification or license
- Recent paystub AND a state photo identification or license

Next steps for continued vaccine clinics: 47 communities reached out saying they would like to continue vaccinating through Phase 3. This is not an obligation. Building the website and new map with pins for clinic information and how to register for appointments. Will receive a

Norfolk County-8 Coalition

MDPH/LBOH Webinar 1/12/2021



response if you have indicated by email that you would like to continue through Phase 2 with a link to the Google doc to update the clinic site information. If you haven't been running a clinic in your municipality, you have to have enrolled in MCVP to receive vaccine. If you've been partnering with a region, we need to make sure you have everything you need to receive vaccine individually.

Q: Can you skip a category?

A: LHDs might not be involved in all of the priority groups. For example, correctional facilities will not be part of LPH work, but it does not mean you can "skip" a category/phase. There will be solutions to help with different priority groups. Don't jump to Phase 2.

Ordering more vaccine: Clinics can indicate that more vaccine is needed via the "weekly survey" that will go out on Mondays. Orders need to be in by noon on Wednesday. Link for survey being sent out to the contact for the MCVP and it is community-specific. You can't share it between communities. If you need another link, you need to email vaccine management unit (DPH-vaccine-management@massmail.state.ma.us)

Some of the questions on the survey are: What priority group are you vaccinating now? What's the total end number? How many more vaccines do you need to complete that group?

Make sure you are reporting on MIIS! If you say you don't have anymore, and if you don't update on MIIS, DPH is not going to know you need more. Once we have this information we take a look at the need, vaccine supply, and go ahead and place the order. We do this in the middle or the end of each week, and by Friday we have a base allocation and ordering plan, and the order goes in for Monday morning. If we order on a Monday, you'll probably get it Wednesday/Thursday. Wait until your order is finalized and you know your vaccine is coming before you set up appointments. DPH doesn't control the delivery of the vaccine.

Questions from Q&A answered out loud:

Reactions after vaccination: Many people might not feel well for a couple of days. If you're a healthcare worker or someone else in the public and you have these symptoms, you need to differentiate between the vaccine reaction or COVID-19. You cannot get COVID-19 from vaccine, it is not a live virus. But you could also get COVID-19 if you are incubating during the time of vaccination, so it's possible you develop COVID-19 after being vaccinated.

Q: Does the Travel Order still apply to people who are vaccinated?

A: Updating Travel Order website to say that people who are vaccinated still need to comply with the Travel Order. Although the vaccine gives you some immunity, we still don't know how much they reduce transmission, so this travel order still applies.

Norfolk County-8 Coalition

MDPH/LBOH Webinar 1/12/2021



Questions from Q&A chat box not answered aloud:

Session number: 1780224183

Date: Tuesday, January 12, 2021

Starting time: 2:58 PM

Jill Conselino - 2:57 PM

Q: Will there be some information released soon on the next phase of vaccination distribution? I'm fielding about 10-15 calls a day from residents asking when they will be able to sign up for their vaccine.-

-Mike Coughlin - 3:01 PM

A: yes

17742129010 Lewis - 3:02 PM

Q: hockey rinks are 25% correct?-

-Mike Coughlin - 3:04 PM

A: athletic facilities were not impacted by the temporary restrictions.

Dan Markman - 3:07 PM

Q: Is there a general mailbox for questions regarding vaccine clinics?-

-Mike Coughlin - 3:09 PM

A: Covid-19-vaccine-plan-ma@mass.gov

Derek Fullerton - 3:08 PM

Q: number of cases btw the players from on surface transmission. Contact tracing is finding it beyond the sports court. Quaranting players multiple times without the data is keeping them out of school for many days -

-Mike Coughlin - 3:12 PM

A: from website: if someone tests positive within 72 hours of arrival due to previous infection, they can use the positive test result plus a note from a doctor documenting their previous diagnosis and recovery to satisfy the testing rule

Peter O'Connor - 3:03 PM

Q: Do you have any information on the current participation rates of the first responder vaccinations?-

Norfolk County-8 Coalition

MDPH/LBOH Webinar 1/12/2021



-Anne Gilligan - 3:20 PM

A: Pool Testing initial interest survey: By January 15, indicate initial interest in participation: <https://survey.alchemer.com/s3/6123054/Pooled-Testing-Interest-Survey>

-

Phoebe Walker - 3:18 PM

Q: Can you share MAHB liability link? Cannot find one more recent than april on the site. -

-Cheryl Sbarra - 3:33 PM

A: Please email me at sbarra@mahb.org for the liability protection memo.

Helen Symons - 3:17 PM

Q: Where did persons 75+ go I don't see it anymore on Phase 2-

-Jana Ferguson - 3:41 PM

A: It's there in the first priority group in phase 2

Cheryl Snyder - 3:38 PM

Q: Has funding been identified for vaccine distribution? We can bill for administration, but that won't be received for a long time - we need funding to set up vaccine sites.-

-Cheryl Sbarra - 3:47 PM

A: <https://www.mahb.org/liability-protections-for-vaccination-clinics-question/>

Caroline Kinsella - 3:48 PM

Q: What phase do doctor's who are in private practices fall? -

-Jana Ferguson - 3:59 PM

A: It depends on whether they are COVID-facing or non-COVID facing.